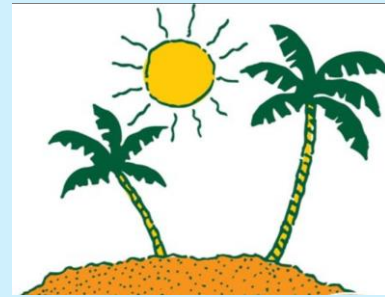




Need hours to recertify? We're here for you.

Many of our courses this month, can be completed in 4 to 6 weeks. They are offered to meet your very busy schedule.



To receive a 10% discount code, just contact:
carolyn.gardner@enetlearning.org



Highlighting the Following Courses for this month.

Student Engagement with One to One

- ***Enroll early!***

Project Management Foundations

- ***Scholarships available***

Project Management - Toolkit for Teachers

- ***Scholarships available***

Educational Leadership in the 21st Century

- ***4 week course***

Teaching Geography in the 21st Century

- ***Learn to use ESRI mapping***

Inquiry in the Science Classroom

- ***Using inquiry in all courses***

Show Me the Money - Writing Winning Grants

- ***Another Favorite!***

Designing Blended Learning -Anytime and Anywhere

- ***For Today's Teachers!***

To find out more and to register, just [click here](#)

If you have any questions about any of our courses, wish to take a course not on the list or need that discount code, please contact carolyngardner@enetlearning.org

We are now partnering with National Geographic Society and can provide workshops and trainings on Geo-Inquiry using NGS resources. Contact us to find out more about this possibility for your staff.



Share this news/newsletter with your teaching friends and join as a team. Enroll early and become a part of these professional online cohorts.

eNet's here to help.

Are you looking for *new ideas, face-to-face workshops or trainings* to excite your staff? Are you searching for personalized PD and induction courses?

Our team is here for you. We provide group rates and your district may be eligible for the CDLS or BOCES discount.

Contact:

[Dan Morris](#) -

danmorris@enetlearning.org

[Carolyn Gardner](#) -

carolyngardner@enetlearning.org

[Jane Brown](#) -

jane@springshosting.com

Leaping Ahead!

